



## PRESIDENT'S CHATTER

Susan Hoy



I am writing this from a table in the eating area of the Quilt and Craft Fair. I have been here every day on the ATASDA stand and running a Make and Take Session. It is wonderful to have the opportunity to speak to so many creative people.

### News from the monthly committee meeting

The monthly meeting was held earlier this week and some very exciting initiatives have been planned for 2024. Starting in February 2024 the Weller's Hill Art Hub will be open to members every 2nd and 4th Monday of the month for free. The purpose of this initiative is to allow members the opportunity to meet, mingle and work collaboratively twice a month. Watch this space for further information about opening times and requirements for attendance.

### Improving our environment

The development of the BVAC sculpture is well under way and we are planning a "Firing Evening", early in 2024 before the official dedication at the Art Expo in July. Events and details will be fully explained over the coming months or ask your representative on the committee for further details.

contact:

[bvac2015@gmail.com](mailto:bvac2015@gmail.com)

PO Box 7098

Holland Park East Q 4121

## WHAT'S INSIDE

.....

### FEATURE

#### PRESIDENT'S CHATTER

*President's thoughts*

### FEATURES

#### BRISBANE PORTRAIT PRIZE

*by Judy Hamilton*

### BVAC NEWS

#### NOTES ON THE BVAC MEETING

*12 October 2023*

#### BVAC POP-UP & THANKYOU DAY

*Invitation to join in*

### MEMBER NEWS

#### VISIONS IN CLAY

*WSC Exhibition & Sale*

#### CREATIVE GLASS SHOWCASE

*The Creative Glass Guild*

#### AN AGM & WORKSHOPS

*Sunshine Beaders Save the Date*

#### UPDATE & WORKSHOPS

*HDG Artists Pastel Workshop*

*Pastel Society of Australia Info*

### FINAL WORD

#### ON CHANGE

*Socrates*

The art work on the large doors area of the building will also be completed for 2024 and should provide a very attractive entrance to the precinct. Thank you to Lily Lee Studios for undertaking this venture.

### Professional Development

The second of our professional days was a huge success and provided valuable information for those who participated. Thank you to Richard for facilitating this workshop. Please remember if you have a request for a particular professional development topic to email Anna Margot on [bvac2015@gmail.com](mailto:bvac2015@gmail.com)

### November meeting invitation

The November meeting for BVAC will be held at the Auditorium at Mt Coot-tha Gardens prior to the bump in for Pop Up Shop. We encourage as many people to attend as possible as this meeting will primarily focus on ways to improve our POP Up Shops and Art Expo as well as gauge member ideas for BVAC moving forward.

A light lunch will be provided for official representatives (BVAC committee representative plus 1) while others attending are invited to bring along their own refreshment. Proposed attendees are asked to RSVP to Anna Margot on [bvac2015@gmail.com](mailto:bvac2015@gmail.com)

If you are unable to attend but wish to have a say please pass your thoughts to your groups representative on the committee.

Congratulations to Art West on your new gallery area and BVAC wishes you every success with this venture.

*Susan Hoy*





# Brisbane Portrait Prize

By Judy Hamilton

Kathy Sullivan  
*Tradewind Annie*



I thought I would like to open this short review with this lovely portrait, *Tradewind Annie*, painted by Kathy Sullivan. Anne Collins may only have tenuous connections to BVAC but let's celebrate them anyway.

Anne co-founded 'The Silk Shed' in Toowong in 1989 with her friend Ruth Francis. Both ladies provided personal support for the idea that became BVAC - a community of groups working together. The Silk Shed provided seed funding for the infant BVAC to get it up and running. At 99, Anne still records her experiences using paint and photography every day.

'The Silk Shed' is a community art group which continues to thrive today as 'Art Space Toowong' with Kathy Sullivan at the helm. BVAC is very thankful for the support that The Silk Shed gave us as we initially struggled to get off the ground in 2010.

The Brisbane Portrait Prize is all about celebrating Brisbane portrait artists and their sitters. It also encourages public engagement with the arts as the audience reflects the community. Any artist with a connection to Brisbane is eligible to enter. Maybe the economic crisis is affecting artists as well, as many of the subjects this year are the artists themselves.

One of my favourite paintings in the exhibition was Rachel South's Self Portrait - where the wild things grow. This self portrait shows a sideways face suggesting she sees the world from a different perspective to the majority view. The snake around her neck references the restrictions she faced during her career. Her abiding love of wildlife and native flora is evident in the references around her head.

Rachael South  
*Self Portrait - Where the wild things grow*



The next portrait is the work of Lyn Diefenbach and was an idea in the back of her mind for perhaps a decade before she brought it to life. This happens frequently with artists. We have an idea and accumulate skills before we have the confidence to tackle the problems the idea presents. If you have an idea, follow it until you put it to rest - but don't follow it too soon.

Lyn Diefenbach  
*I am not Afraid*



# Brisbane Portrait Prize

By Judy Hamilton

Liam Nunan  
*Self Portrait*



Fiona Lowry  
*Before the crossroads (Vin age 11)*



Natalya Hughes  
*The Painter (After Kirchner)*



Karen Dyer  
*Ladies Who Lunch*



The exhibition of finalists is at the Powerhouse in Teneriffe until the end of October.

Also at Teneriffe, is the "Next Gen" competition which showcases the works of artists under eighteen. These exhibitions are complemented by the *Salon de Refuses* at the Petrie Terrace Gallery of the Royal Queensland Art Society. These fabulous portraits failed to convince the judges of their worth in the main competition.

This exhibition provides excellent exposure for the artists who entered the Brisbane Portrait Prize but were not selected as finalists, and will be open from Wednesday to Sunday, 10am to 3.30pm. Entry is free, except for ticketed events.

Gaylene Moor  
*Jess at Home*





## Notes from BVAC Meeting October 12th, 2023

**Attendees:** Pricilla Gibbs & Marilyn Revell (WSQ), Ann Manion (APAT), Joanna Faber (PAQ), Susan Hoy (ATASDA), Pauline Stevens (proxy SA & SB), Merla Hynes (PSA), Lyn McGlade & Judy Hamilton (WSC), Joanna Fear (QBG), Anna-Margot Collins (QEG),

**Apologies** Peter Rayson (WCQ), Kirstin Farr (CAQ), Steven Norris (AWCG), Sandra Evans APAT), Wendy Goode,(SA).

**President's Report:** The second of our professional development workshops was held at BVAC on Saturday 23rd September. Both morning and afternoon sessions saw participants become more familiar with the basic techniques of using their camera and staging for a photo shoot. Many thanks to Richard for facilitating this workshop and Anna Margot and Allie for organising morning and afternoon tea. Some suggestions for future workshops include – stretching a canvas, framing your work, effective use of social media, marketing. If you have other suggestions, can you please contact BVAC on [bvac2015@gmail.com](mailto:bvac2015@gmail.com), We are hoping to run four professional development days per year.

A huge thank you to Joanne for continuing to do a fabulous job of managing the BVAC Hub. There is a lot that goes on behind the scenes and without this commitment we'd experience many difficulties.

At the last meeting it was suggested that as part of our process around highlighting the Pop-Up Shop, we would encourage member groups participating to develop signage using a heart shape as the emblem. It is important that we engage with the public visiting the gardens and direct them toward our event.

The proposal to establish a piece of artwork in the BVAC garden area is underway.

### 6. Treasurers Report

We are showing a small profit over the last 12 months. Income is at an all-time high, but so is spending. It's all in perspective. Suggest we move away from the high-priced Origin to Red Energy to save us around 30% on electricity. We are using more than ever.

**Building and Maintenance:** Tag and Testing has been done for the year, failed items have been marked and removed. Lift has been well and truly maintained and the missing lift key found and returned to its proper place. Both the door upstairs and downstairs have been fixed, repaired and door jamb replaced. Still needs to be shut firmly, and there is no evidence of tampering with the doors, they are just old and wearing out. The air conditioner grant is being awarded in early November, so hopefully we get it.

**Website Report:** Kirstin is asking whether anyone has unwittingly stumbled upon unsavoury websites while trying to log into ours(!) Could you please let us know.

**Pop-up Shop:** Pop-up shop November 10-12, 2023. All space is booked out and advertising is ramping up, so please send in your photos for the publicity. We have some fun ideas to try and bring some fun and new interest to the Pop-Up Shop.

More information will be sent out next week, and I have attached a new flyer to be spread around your groups, please.

Future Pop-Up dates for 2024: June 6-9, 2024, and December 12-14 2024

Art Expo date for 2024: July 20-21, 2024.

## NOTES FROM BVAC MEETING cont'd

### **GENERAL BUSINESS:**

Peter would like to swap our electricity from Origin to Red Energy. Origin \$606 compared to \$494 for Red energy. Passed

The solar panels are not doing what we want because of the air-conditioners - which draw most of the power. If we install two extractor fans to reduce the heat, we won't have to use the air-con so much. Joanna will put in an application for works to get 2 whirley birds installed in hopes of drawing out more hot air to help with the running of air conditioners.

As a result of discussion at the last meeting to have the Hub, both up and downstairs open for members use on the 2nd and 4th Mondays of the month, starting in February next year.

**Painting of doors downstairs:** Anna-Margot will be advising Perrin as to what the next step is in getting the doors painted, it has been decided that the logo is to be spread across the 2 doors on the outside only. The painting should start happening soon.

**Bookings 2024:** Dates for the major BVAC events are listed above and bookings for the hub are open, so please send in you preferred dates and regular bookings to [bvac2015@gmail.com](mailto:bvac2015@gmail.com) or [wellershillartshub.bookings@gmail.com](mailto:wellershillartshub.bookings@gmail.com)

**November meeting** to be held at Mt Coot-tha Auditorium followed by a discussion about what we can do and ideas for how to develop the pop-up shops and the Art expo for next year. Lunch for up to two members of each group is being supplied, each group needs to send [bvac2015@gmail.com](mailto:bvac2015@gmail.com) the names for their 2 members that are included in the lunch, other group members are welcome to join in the discussion and bring their own bag lunch, tea and coffee will be supplied.

**Strategic Development:** a good discussion and result on the first stage of the SD and it has been decided to hold off on another planning meeting until after the new year so we can take on board the ideas presented at the November meeting.

**Exhibitions:** We are asking you to ask your members if they would like BVAC to run an exhibition in 2024-2025. Not another pop-up shop, not a competition, just an exhibition with a theme.

We would like to make the firing of the proposed sculpture a BVAC social event. The kiln will be constructed around the sculpture so people can see the process. It could be a barbecue or bring a picnic. The unveiling of the sculpture will take place on our Art Expo weekend. We will be inviting a state or local member to do the unveiling.

If you know of any interesting venues that would be suitable for large scale exhibitions at a reasonable cost please let us know.

**Update on Art West Community Gallery:** Work has begun on refitting their new space at Indooroopilly Central above Spotlight. The plan at the moment is to open early in the new year. Sounds exciting. We wish them well in this exciting venture.

**Meeting closed at 10:50 am**

**Next Meeting November 9th, 2023, 9:30 am at Mt Coot-tha Auditorium**





## *BVAC's Annual "Thank you" Day*

in November each year, BVAC likes to say Thank You to our Member groups for supporting the Brisbane Visual Arts Community for the year.

BVAC Member Groups are invited to join the BVAC Committee for our Thursday 9th November meeting at the Auditorium, Mt Coot-tha Botanic Gardens.  
Start: 9.30am

Following the meeting, Lunch will be provided for two authorised members from each group.

**BUT**

Because we would like to encourage discussion of ideas from as many members as possible from within our groups as to the future direction of BVAC, you also are invited to bring your lunch and join in.

Set Up and Bump in for the Pop-up shop will follow from 1 - 5pm

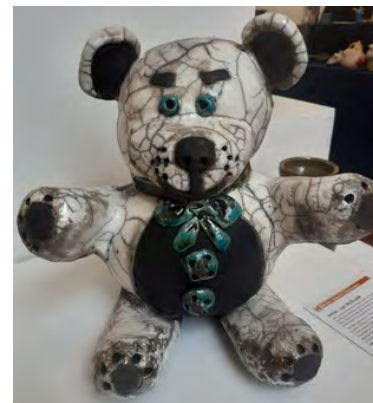


What a weekend at the Mt Coot-tha Botanic Gardens with two spectacular art shows. Western Suburbs Clayworkers held their annual exhibition in the Richard Randall Gallery, while the Creative Glass Guild took over the Auditorium.

## Western Suburbs Clayworkers - Visions in Clay

Western Suburbs Clayworkers' Annual Exhibition, Visions in Clay, saw 24 members exhibiting their best works on plinths, smaller pieces on tables around the walls and finally, there were pieces designed to be hung on walls. An exhibition with it all. The chaos of the plinth-drop at the gallery on Friday resolved itself into a well curated show.

The Western Suburbs Studio in Sherwood is well equipped with pottery wheels, but functional ware is a relatively neglected area in the group. However, the lack of quantity is made up for with quality. David Bartholomew exhibited strong forms finished with his signature fluid brushwork designs. Cathy Holmes exhibited teapots, bowls, and coffee mugs which proved to be very popular. Co-founder of the group, Gai MacDonald, is a wonderful thrower and showed a collection of finely finished lidded pots, many completed in a raku firing. Raku ware is low fired and is not functional. Claude Brock showed his skill on the wheel with some large-scale pots.



The fun, quirky sculptures of Linda Tilbury provided a highlight of the show. Her work shows a lovely balance of matte finishes with touches of gloss to highlight special features. WSC President, Lyn McGlade, showed a remarkable "Teddy Bear" finished in a raku firing. This bear was a break from Lyn's tall animal sculptures. Judy Hamilton also broke from her usual forms and showed two works finished with a rich barium blue glaze.

The "Wall Challenge" has been a feature of WSC's exhibition from the beginning, but in its first few years there were few pieces entered. In this years show, the walls were adorned with ceramic art for the walls.





# The Creative Glass Guild - Creative Glass Showcase

Who would have thought there were so many things you could do with glass? The Creative Glass Guild of Queensland - that's who.

The Creative Glass Guild presented their Creative Glass Showcase at the Auditorium, Mt Coot-tha Botanic Gardens in October and what an Aladdin's Cave of sparkle it was. The Showcase was a combination of sales and demonstrations and featured a "Silent Auction" of a beautiful leadlight panel.



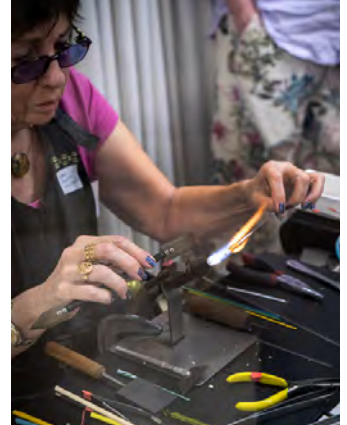
Display stands, especially constructed for the Guild, showed the work to perfection (see cover image). These stands provided a flat surface to show the glass creations. Large mirror tiles placed under the glass reflected the colours, adding another dimension to the display. Small glass ornaments were hung from the top of the stands.

One of the most noticeable features of the Showcase was the number of members who volunteered to demonstrate their craft while talking to the visitors and explaining what they were doing.

One of the most noticeable features of the Showcase was the number of members who volunteered to demonstrate their craft while talking to the visitors and explaining what they were doing.



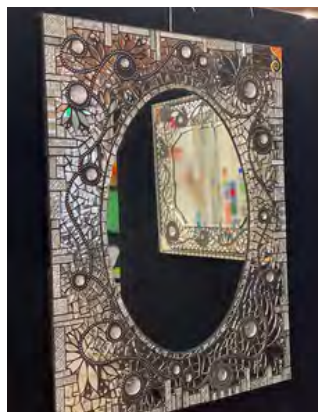
Evert demonstrating copper foiling



Irene making glass beads

One of the volunteers, Catherine Conaty explained how glass can be made safe for children to work with by using a rock tumbler.

The Creative Glass Guild is a not-for-profit organisation whose experienced tutors can teach the many skills and techniques to enable you to create your own unique handmade glass pieces. So if you would like to learn about bead making, glass slumping, glass fusing, kiln carving, glass painting, lead lighting, copper foiling, and mosaics, contact the Creative Glass Guild to get started. Classes are hands-on, and you learn as you go. In beginner courses and workshops, no prior experience is necessary. Courses are good value for money.





*Save the  
date.*  
**SATURDAY  
NOVEMBER 4TH**

**WORKSHOPS  
& AGM.**

## Sunshine Beaders

Combine their AGM with  
a selection of workshops on the  
4th November  
at BVAC upstairs all day.

Workshops include:  
Kumihimo necklace,  
Loom worked bracelet  
Polymer clay note book  
Candlemaking and  
Beaded necklace & earring set.

Morning & afternoon tea provided.  
Visit [www.sunshinebeaders.com](http://www.sunshinebeaders.com)  
for the full details.





# PASTEL 'LANDSCAPE'

(Using Complimentary Colours)

with

**Penelope Gilbert-Ng**



All welcome at our HDG-Studio,  
37 Quarry Rd, Sherwood 4075.

**A Wednesday Workshop Event**

**18 Oct '23, 10am to 3pm**

**\$60 members \$70 non-members**

**(Maximum number of participants 12)**

## **ABOUT THE WORKSHOP**

Students will explore how to simplify shapes within a landscape. Firstly by designing these shapes within a thumbnail (Notan) drawing. This will be followed by several smaller exercises looking at complementary colours, creating mood. White pastel paper once toned with a watercolour under-painting will then be worked on using pastels. Students are encouraged to bring their own landscape images, either early morning or late afternoon references with shadows. An iPad is ideal for references to work from as the colours retain their intensity.

## **ABOUT THE ARTIST**

Penelope Gilbert-Ng is a Master Pastellist, Life Member and Past President of the Pastel Society of Australia as well as Past President and Fellow of the Royal Qld Art Society. She is a sought after tutor with Art Societies and Groups Nationally in all mediums and we are honoured to have her as our tutor for this Workshop. Penelope has studied art in Australia, New York and New Mexico and believes that continual learning is essential for self-development as an artist. Over her extended career she has been a finalist in the Archibald and Portia Geach Portrait Prizes and has had numerous solo and joint exhibitions of her own. Furthermore, her commissioned paintings are represented in corporate and private collections worldwide. The winner of many competitions combining knowledge and dedication to her art has also enabled her to judge Art Shows since 2002.



**Registration required by Wed 11 Oct'23.**

Forms are on the website @

[www.hdg-artists.com](http://www.hdg-artists.com) or contact the

Workshops Coordinator, Marie O'Flaherty @

[hdg.workshops@gmail.com](mailto:hdg.workshops@gmail.com).

*(List of Materials supplied on Registration).*

# The Pastel Society of Australia

By Merla Hynes



**Soft Pastels Workshop**

*'Dancing with the edges'*  
Florals with Stephanie Clark

Sat 25—Sun 26 November 2023  
Q.A.H. 347 Old Cleveland Rd,  
Coorparoo, Brisbane

Join passionate pastel artist, Stephanie Clark, as she helps you create depth in your florals. Learn how to handle edges—soft, hard, lost—for maximum impact. Come along, bring a friend, for 2 days OR 1. Sat or Sun. (\$130 per day PSA member price, \$150 p.d. non mbr). Details, materials and shop online are at this link on the Pastel Society of Aust. website: <https://pastelsocietyofaustralia.com.au/workshops-brisbane/> or email [secretaryozpastels@gmail.com](mailto:secretaryozpastels@gmail.com)

Though we had a lapse between reps for BVAC, I want to let you know that the P.S.A. Inc. is still going strong with 300 members across Australia and New Zealand. Our aim is to celebrate and promote soft pastels as a fine art medium. Soft pastel is pure pigment with a binder - not unlike oils or watercolour, and they now come in all shapes, sizes and hardness of sticks, blocks, terrages, pencils and PanPastels. There are more and more vibrant colours and interesting surfaces to apply them to.

Artists laud pastels because they are so versatile and immediate. You can pick up one up and start using it straight away. It's as handy for layering colours with broad, sweeping strokes as it is for detailed mark-making. It's portability makes it popular with *en plein air* lovers too. It's often combined with other medium, such as with a watercolour or acrylic (or acrylic ink) underpainting. With pastel on top, the colour and drips of the underpainting show through to create interesting effects.

## Meetings of the P.S.A.

Our Brisbane meetings are held in the upper Community Hall inside the Mount Gravatt Showgrounds on the 1st Tues of the month from 6.30 to 9.00 p.m. Entry for members is \$5 and visitors \$10 to see a live pastel painting demonstration with a different tutor each month. Would love to welcome interested visitors from other art groups. We also hold monthly ZOOM meetings where members from across Australia and New Zealand are sent a link to join and



watch via ZOOM, the pastel demonstrator of the month. They can also see members' works being judged from images of their paintings. Non-members can join any ZOOM for \$10. Contact me at [secretaryozpastels@gmail.com](mailto:secretaryozpastels@gmail.com)

#### Memberships of the P.S.A.

Membership is \$50 (\$70 a family) to the end of the financial year in which you apply. It's better value to join early in the financial year. On the PSA website, members access bi-monthly Newsletters (packed with reports and photos of pastel demonstrations and workshops), our monthly members' competition entries (a slideshow of artworks with the judge's comments overlaid), and the monthly video of tutor demonstrations from our ZOOM meetings. Roam our website here. <https://pastelsocietyofaustralia.com.au/>

The PSA is a member also of the International Association of Pastel Societies (IAPS) based in the USA and as such, our members can enter online competitions run by any of the associated pastel societies around the world. Here's the IAPS Spring exhibition link. Take a look at some of the stunning juried entries. <https://www.iapspastel.org/>

If you have been thinking you would like to try pastel, I have included photos of the four main stages of creating a work in pastel from a recent pastel demonstration painting created from a blurred photo taken out of a train window. A young mother and two children are waiting at the station for a train. The aim of the demonstration was to show how to identify the big shapes for adding colour and tone and not to be distracted by the detail in the photo.



Original photo



Blocked in big shapes



Details added



Finished

At the top of this article is the flyer for the next P.S.A. Workshop:

#### **'Dancing with the Edges – Florals' by Stephie Clark**

**Date: 25-26 Nov 2023 (2 days or any 1 day)**

**Where: Queen Alexandra Home (Q.A.H.), Coorparoo.**

**Any ability level.**

**If you've always wanted to try pastels  
you won't find a more supportive demonstrator to guide you.**

The Pastel Society of Australia Inc. M 0437 456 876  
E [secretaryozpastels@gmail.com](mailto:secretaryozpastels@gmail.com) W [www.pastelsocietyofaustralia.com.au](http://www.pastelsocietyofaustralia.com.au)

## The Last Word

"The secret of change  
is to focus all of your energy,  
not on fighting the old,  
but on building the new."

Socrates

### BRISBANE VISUAL ARTS COMMUNITY (BVAC) COMMITTEE CONTACTS

#### President

*Susan Hoy*  
susanhoy@bigpond.com  
ATASDA

#### Secretary

*Anna-Margot Collins*  
bvac2015@gmail.com  
Queensland Enamellers Guild

#### Treasurer

*Peter Rayson*  
ninety-nine.94@optusnet.com.au  
Watercolour Society QLD

#### Bookings Co-ordinator

*Sandra Evans*  
wellershillartshub.bookings@gmail.com  
APAT

#### Vice-President & Newsletter

*Judy Hamilton*  
jrhylleh@hotmail.com  
Western Suburbs Clayworkers

### Committee

ATASDA :

*Susan Hoy*

Ceramic Arts Queensland :

*Kirstin Farr: Website*

Creative Glass Guild, QLD :

Lilley Lee :

*Perrin Millard*

Papermakers Artists, QLD :

*Joanna Faber*

Scattered Arts :

*Wendy Goode: PO Box Monitor*

Sunshine Beaders :

*Pauline Stevens: Tablecloths*

Watercolour Society, QLD :

*Theresa Skirving*

Q Bookbinders Guild :

*Joanna Fear: Building & Maintenance*

Art West Community Gallery :

*Steve Norris*

WS Clayworkers :

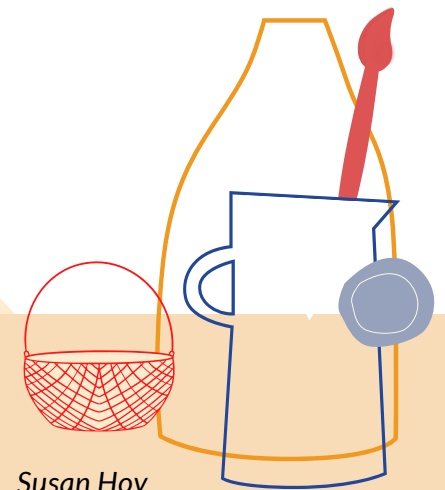
*Lyn McGlade*

Art from Within :

*Richard McLaren*

Pastel Society QLD

*Merla Hynes*



contact: [bvac2015@gmail.com](mailto:bvac2015@gmail.com) or  
PO Box 7098, Holland Park East QLD 4121