



PRESIDENT'S REPORT

Judy Hamilton



I hope you all had a wonderful break and managed to avoid the dreaded Covid when Queensland opened up to the world again. Our first meeting for the year was well attended and many good ideas were made better by the lively discussions that ensued.

As we start our new year, let us remember that BVAC is not just another group on the Brisbane art scene. We are a community, formed by interested art and craft groups and run by all groups for the benefit of us all. Therefore, it is important for us all to participate and have a say, if we are to build a truly strong and inclusive community. Next month is our AGM and we are asking all groups to provide an active representative for the BVAC committee for this year, so that our activities into the future will reflect and provide something for all our member groups.

After our very successful Christmas Pop-Up Shop at Mt Coot-tha Botanic Gardens, we asked groups to indicate their interest (or not) in continuing with our traditional two pop-ups a year. Groups decided that both pop-ups should remain, but they also wanted the Open Weekend back again. This has led to a dilemma, as the only weekend available for BVAC to hold the Open Weekend at the Hub is just two weeks after the July Pop-Up.

contact:

bvac2015@gmail.com

PO Box 7098

Holland Park East Q 4121

WHAT'S INSIDE

.....

FEATURE

HANDMADE-NESS

Thoughts from Di Peach

MEETING MINUTES

*Notes from the BVAC meeting,
10th February 2022*

BVAC Community Art Expo

MEMBER NEWS

VISIONS IN CLAY

WSC Exhibition

SCATTERED ARTS

An invitation & Event dates

SKY, SEA, LANDLINES

Papermakers QLD Exhibition

ATASDA

Upcoming Events

ARTICLES

THE WAY WE WERE

Sharing local art history



It was decided to work on building a better Open Weekend this year and bring back the winter Pop-Up next year. Plans are already being formulated for a spectacular BVAC Community Arts Expo (Open Weekend), which will be held at the Hub. This will provide an opportunity to advertise your group, provide demonstrations or small workshops and of course make sales.

Space at the Hub is now at a premium. We have exciting plans afoot to increase the footprint of the Hub and will shortly be taking these to the Brisbane City Council. These are long term plans and they won't end our short term squeeze. The Lilly-Lee Art School is now up and running at the Hub, and making great use of the downstairs space. A bright green Lilly-Lee advertising sandwich board placed at the edge of Weller Road should attract attention.

We do have the facility to hang rigid advertising signs under the permanent BVAC sign on Weller Road. These signs should only be displayed while your group is at the Hub for an activity.

As for 2022, let us hope it does not live up to its pronunciation—twenty twenty too. We have been through 2020 and didn't like it at all. I hope this year will see you all emerge from the clouds of Covid and have a sensational year.

Judy



The Lilly-Lee Art School @ The Hub

Handmade-ness: Some Thoughts from Di Peach, Ceramic Arts Queensland

Extract from the opening speech for Visions in Clay, Western Suburbs Clayworkers annual exhibition, Richard Randall Studio, Mt Coot-tha, December 18-19, 2021.

As you would be aware the popularity of handmade pottery and ceramics has exploded everywhere on the planet in the last decade ... and I believe it was triggered by just one thing, the television program "The Great British Throwdown". I'm yet to actually watch an episode – but I have heard a lot about it, and even met Keith Brimmer-Jones whilst at Gulgong – Australia's premier clay exposition held in NSW.

This explosion was fuelled in part by Covid lockdowns, when so many beginners bought clay and tools, wheels and kilns, and started exploring this awesome material in the comfort of their homes, with the great internet as their tutor.

I fear the consequences of this approach will be a real challenge to the industry as time goes on.

However, it might also reveal some exciting innovations brought to light by novel and unfettered thinking, and I look forward to seeing if this happens.

Meanwhile I am concerned about the terminology and the perceptions surrounding current practice, and the enthusiasm in which some new work is credited with being 'cutting edge', as if it has never been seen or done before.

Being a student of the 60's and 70's I've seen and done an awful lot of weird things with clay and firing, with 'awful' usually being the most appropriate description. It's possible that all these things have been made before, but never thought worthy of displaying on a plinth.

My disappointment with current commentary is that it seems to be applauding the "handmade-ness" of an object over its visual appeal or design integrity, and any flaws or 'wonkiness' are given high praise, as if these detractions are necessary proof of it being hand-made.

This is perhaps a reaction to the decades of slick factory-made ware that we have become accustomed to in the slump years of studio production.



Photo from Di's Holstein's 1-4 series

But, we need to be careful not to fall into a trap of making to satisfy this re-active market rather than making to please ourselves and our innate creativity and artistic moral values.

It is up to groups such as yours, Western Suburbs Clayworkers, and mine, Ceramic Arts Queensland, to ensure that the public gets to see the genuine articles, made with the right intentions, with as much ingenuity, innovation and integrity as we can muster, so that the amazing character of this material is exposed in all its possibilities and disguises, with the knowledge that everything we fire has the potential to last forever.

Dianne Peach (President CAQ)

Notes from BVAC Meeting February 10, 2022

Attendees:

Wendy Goode (SA) Chris Bryant (Papermakers); Marilyn George (QBG); Pauline Summers (Sunshine Beaders); Liz Horrigan (ATASDA); Shirley McCormick (Leathercrafters); Susan Hoy (ATASDA), Peter Rayson (WSQ); Judy Hamilton (WSC); Anna-Margot Collins QEG); Sandra Evans (APAT).

Apologies:

Natalie Parrish

President's Report:

It has been quiet in Presidential land. A reminder to all groups that there is a dedicated email for general business with BVAC <bvac2015@gmail.com> This is checked daily by the secretary who directs emails to the relevant people and provides a paper trail. My personal email is only for content for BVACConnex. Email contacts are provided each month in BVACConnex.

It is good to see that Lilly-Lee Art School is up and running and by having a sandwich board on Weller Road, they are advertising themselves (and us) constantly. We have had a request from Ben Reeve, a rug making artist (tufter) seeking to become involved with BVAC as he is an extreme local. I directed him to check our calendar for days when space is available. He will need to talk to Sandra E. about his aims.

This week, I heard the following words: "If we are not all involved, we are not a community". Discussion produced "If we are all involved, we are a real community."

Nominations for 2022 Committee close on Feb 28. But can come from the floor at the AGM.

Treasurer's Report:

A few outstanding invoices.

Building and Maintenance:

- We have an outside sink that is to be used for cleaning brushes.
- The grant for building work has been put on hold because of difficulty in securing a builder.
- We have begun the process of renewing our lease on the building, which is up for renewal in February next year. We are hoping to increase our footprint at the Hub so that we can expand. Currently our lease is for the building and one metre of land surrounding.
- We are looking for a new maintenance supervisor. Sandra has done the job for 10 years but will give any applicant lots of help.
- Lilly-Lee has been approved as a member of BVAC and a small storage space has been fenced off downstairs and like their space.

Exhibition Coordinator:

Artisan has cancelled their April event. We are not rebooking at this stage for next year.

Groups asked after the 2021 Christmas Pop-Up that the event be retained in 2022. Unfortunately we have a clash of dates with the Pop-Up and the BVAC Community Arts Expo (formerly Open Weekend). It was decided unanimously that we cancel the July 15-17 Pop-Up to concentrate on building up the Community Arts Expo on July 22-24. This is in line with our policy to develop the Hub as a venue.

BVACConnex:

Advertising an arts event in BVACConnex is free. All members are invited to submit art related content to the Editor by 5pm on the Friday following the BVAC meeting. Please submit as pdf or jpeg format.

NOTES FROM BVAC MEETING cont'd

General Business:

- **QBG** sought clarification on who can use the Hub. Subject to availability, the Hub may be hired by any like-minded group. This encourages community and avoids exclusivity. Non-members are charged at a higher rate than member groups.
- **ATASDA** requested the purchase of a whiteboard for displaying ATASDA notices, and a glass cabinet for displaying their works. As CAQ does not use their whiteboard, this was reassigned to ATASDA. As part of their move to the Hub, Scattered Arts was allowed to have a lockable glass cabinet upstairs to sell and show their work. A second glass cabinet will be purchased for general use. Displays can be on monthly rotation.
- **Membership** renewals and AGM position nominations are due by February 28. Please complete a new form digitally or send by post each year.

Meeting Closed: 11.35am

Next Meeting: AGM, The Hub, 10th March 9.30am



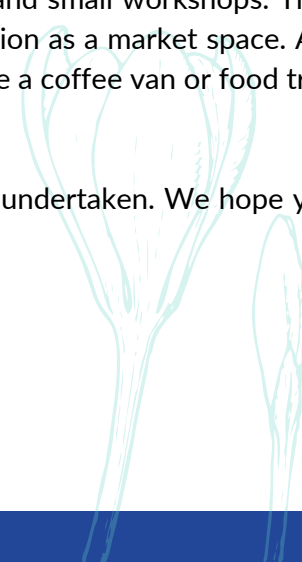
BVAC Community Art Expo

The idea of the BVAC Community Art Expo grew out of the very successful Open Weekend held in 2021 and an application organised on our behalf by Sandra Pearce (Papermakers) to the Brisbane City Council to be considered as a venue for an event in the Brisbane Festival.

Many of you will be sad that we have decided to put the July Pop-Up on ice yet again, but BVAC's long term plan is to develop the Hub as a known centre for art.

Think of our Art Expo as the Open Weekend on steroids. Initial planning is underway with thoughts of doubling the undercover space available to groups by setting a large marquee on the space in front of the Hub. The plan is for this section to be used by groups for demonstrations, and small workshops. The Hub will again be open to show what our space has to offer, but it will also function as a market space. As with our Pop-Up Shops, groups will look after their own sales. It is planned to have a coffee van or food truck on site for the weekend.

This is the biggest and potentially the most exciting venture that BVAC has undertaken. We hope you will join us on the journey.





Brisbane Visual Arts Community

AGM

**All Groups who are members of BVAC
are invited to send their representatives to the
BVAC Annual General Meeting
to be held at
The Hub, Tarragindi on March 10 at 9.30 am.**



*Groups building better
groups through BVAC*

Visions in Clay



With their exhibition, *Visions in Clay*, over the weekend of December 18-19, Western Suburbs Clayworkers (WSC) can probably lay claim to holding the last Exhibition and sale of the BVAC family for 2021. WSC has arrived at an interesting formula for their exhibition – exhibition standard pieces occupy plinths in the centre of the gallery and are surrounded by market quality work from exhibiting artists. All pieces are for sale.

It is interesting to reflect how this exhibition, which has been running annually since 2014, has grown and changed. Ceramics fits well into the Barnett Newman story that “sculpture (or in this case, ceramics) is what you bump into when you stand back to look at the paintings”, but with no paintings in sight, Western Suburbs Clayworkers, in its first exhibition, set its members a challenge that continues as “The Wall Hanging Challenge”.

In the first years, the Challenge, even with free entry, struggled to attract participants. Move to 2021, and the hanging system of the Richard Randall Gallery at the Botanic Gardens was working overtime as the walls were covered with ceramic hangings. Such a variety of ideas were evident in these pieces.

Most of these pieces are suitable for indoors or outdoors and proved to be best sellers.

Opened by the doyenne of Queensland Ceramics, Di Peach (President of CAQ), this exhibition was more sophisticated than its predecessors and members can be proud of their achievements in 2021.

Western Suburbs Clayworkers caters for potters at all stages of development – from learners to those with years of experience and works range from utilitarian to purely decorative. The result is the amazing event presented by Western Suburbs at the end of 2021.





images from Visions in Clay exhibition



Scattered Arts

During January, Scattered Arts set up a base at the BVAC Hub to host get togethers and workshops on Wednesday mornings. Visitors are welcome to join in for a morning of creative activity, encouragement, a cuppa and most of all a chat. These events will continue into the coming months, so please check the calendar below or keep in touch by signing up for the Scattered Arts newsletter via www.scatteredarts.com.au.

We look forward to meeting you.



February:

Wednesday 16th:

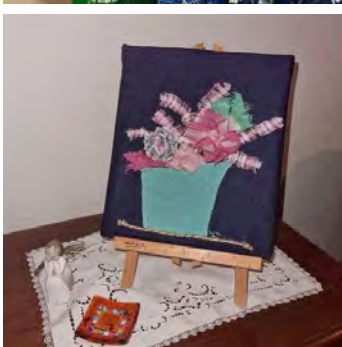
Show and Tell 9.30am - 12pm

Workshop: Resin Jewellery \$75, Bookings Essential

Wednesday 23rd:

Stitch Together 9.30am - 12pm

Workshop: Crochet Coaching \$35, Bookings Essential



March:

Wednesday 2nd:

Members Get Together 9.30am - 12pm

Wednesday 9th:

Demonstration - Tyvek 9.30am - 12pm

Workshop: Beading, Bookings Essential

Wednesday 9th to Sunday 20th:

Scattered Arts at Kay West Gallery
Scattered Arts Makers will be selling their work and hosting workshops during this time.
Opening Event Friday 11th, 6-8pm

Wednesday 16th:

Show and Tell 9.30am - 12pm

Workshop: Resin Jewellery \$75, Bookings Essential

Wednesday 23rd:

Stitch Together 9.30am - 12pm

Workshop: Crochet Coaching \$35 Bookings Essential

Wednesday 30th:

Info Session - Photographing your work for sale.
9.30am - 12pm

Please visit the Scattered Arts website for information, cost and booking for all events.

www.scatteredarts.com.au



Scattered Arts
C/- BVAC Hub 140 Weller Rd,
Tarragindi QLD 4121
Email: scatteredartsbrisbane@gmail.com

Sky, Sea, Landlines

A Papermakers & Artists Exhibition



This exhibition celebrates and documents an emerging community of contemporary artists based in Qld that are making works of art and addressing contemporary issues through the properties of paper itself.

It will be a rare pleasure and a unique experience for the public to see art work where the medium of paper extends beyond its character as a substrate to being an essential ingredient in the portrayal of the concept of lines in our environment.

The 'Sky, Sea, Land Lines' exhibition will present an eclectic array of works. Works that have been motivated by important moments which have been etched into the mind, making an impression on the artist; moments that are used as content to tell a story in, on and with the medium of paper.

The exhibition also features 2 "Walk and Talk" session daily at 11.00am and 2.00pm. where visitors will be able to talk to the artists about the works.

When you have enjoyed the exhibition there is a second chance to see more works created in the Artisan Store. Many of the exhibitors have skills in other mediums, so as well as cards, note books, unique miniature books and journals expect to see jewellery, baskets and works in the fibre arts. The best place to select your individually designed art piece for any gift giving occasion.

Email: papermakersqueensland@yahoo.com

Web: www.papermakersqld.org.au

Facebook: Papermakers and Artists Facebook Group



Australian Textile Arts & Surface Design Association Events & Diary Dates

Well another year is starting and we at ATASDA Queensland have a very busy year ahead. Put these in your Calendar:

Inspirational Meanderings

the first of 4 inspirational meandering will be held at Lota Park on Friday 25th February. We are going to explore how 4 different environment impact on our art and will spend the morning sketching, photographing the bay and mangrove walk. Everyone is welcome to join us.

Textile Taster

Each meeting we explore a different medium which can use in the creation of our art work. This Saturday meeting on 12th March we will be exploring the use of felt pen and alcohol on paper, fabric and yarns.

Special Guest Speaker

At the 12th March meeting we also have a wonderful guest speaker Laura, who will be exploring the world of art from the perspective of Autism. Laura was only diagnosed with Autism at 50 and this has impacted on her worldview expressed through her art.

If you are interested in attending any of the above events please contact Susan Hoy our Vice President at susanhoy@bigpond.com

Up and Coming Activities for ATASDA Qld

We have been accepted to participate in the Small Wonders Exhibition to be held at The Plant Empire from Saturday 2nd April until Friday 8th April. Our exhibition will focus on the world of plants and vegetables with contributions from members incorporated in the overall exhibition. Do put this exciting event in your diary.

Helen King was our talented guest speaker at the Xmas meeting and provided a beautiful display of her unique work and talked to us about her inspiration and attitude towards her creations. I must say everyone's minds were ticking over and working out how to incorporate their own signature style into this format. Helen is delivering a full day workshop on 4th June 2022 and full details are available on the [ATASDA website](https://www.atasda.com.au).

Susan Hoy
Vice President
ATASDA QLD



The Way We Were

Between 1944 and 1969, it was relatively common in Australia to find dedicated art gallery spaces in large department stores, along with hairdressers, beauty salons, and restaurants. These facilities were seen as a way of providing a total experience of elegant living for its shoppers, and shopping in those days was a whole day experience complete with hat and gloves. Finneys, Allan and Stark, McDonnell and East and T C Beirne were some of Brisbane's department stores where you would find professional gallery spaces that could be altered in size and hired to stage solo and group exhibitions of original work.

The department store galleries initially had no competition. Small, intimate stand-alone commercial galleries were not common in Brisbane until the 1950s. Moreton Galleries opened in 1945 but it was 1951 before it was joined by Brisbane's most famous gallery of the period—the Johnstone Gallery. A plethora of small galleries opened throughout the 1960 catering to all tastes in art in Brisbane—from ultramodern hard-edge abstraction to traditional works.

T C Beirne's gallery in Fortitude Valley was the setting for the graduation art show from the last cohort of two-year trained specialist art teachers from Kelvin Grove Teachers' College in November 1969. This was my first art show. In the art teaching course, students studied art history as well as painting, sculpture, pottery, design, screen printing, lino block printing and batik painting.

The Telegraph newspaper covered the exhibition and took this photo of two girls (I'm the dark haired one) minding the exhibition. We are wearing dresses we made from material we had block printed with Jim Aitkenhead. Helen Barnes sits at a table covered with a block printed tablecloth and is examining a pottery chess set made by Jenny Thompson. I am smoothing out a large, silk-screened wall hanging of *The Last Supper* by Roger Waller.

Speaking of the pottery chess set above, it is possible that it was fired in a kiln like the one in the other photo. In 1970, my first year of teaching, it was very rare for high schools to have electric kilns and to fire pottery all we needed was about 150 house bricks, and in this case, a drainage pipe, time and lots of wood.

I found these photos when I was doing a big clean up around my house. How about you? A friend of mine is currently researching the "Invisible Sculpture" that formed part of the inaugural exhibition of Queensland Sculpture Society in 1969. It is still in front of City Hall. Do you have a photo from art in the past in Brisbane that you would like to share in BVAConnex? Your story can add to the story of art in Brisbane.

Judy Hamilton



Create & Connect Conference



This is the third year for BrisStyle Inc's one day *Create and Connect* conference for creatives. Join them to connect and network with other like-minded makers in a day of learning and laughter.

At this event, a host of inspiring creatives and business leaders, including Claire Ritchie, Amanda Hayman and Troy Casey from Blaklash Creative as well as Magpie Goose and Christina Kelly from Made590 will deliver talks, and an interactive Q&A panel discussion will be hosted by Angela D'Alton and Renee Baker from Make Good Things.

Create & Connect 2022 will be an opportunity for attendees to walk away inspired and ready to take their own businesses to the next level! The event is fully catered and included in the ticket price, along with a goodie bag are lucky door prizes drawn throughout the day and you will be invited to stay at the venue for networking drinks after the event has concluded.

Bring a creative friend or come along on your own and meet other like-minded creatives to give your creative business a boost for 2022. Seats are limited so you will need to register. Tickets also include recordings of all sessions for you to watch back at your own time, a soft copy of notes throughout the day scribed by Jimmy Patch, as well as inclusion in a closed Facebook group for extra hints and tips for your business and connection to the attendees on the day.

Proudly supported by Brisbane City Council.

Thursday April 28th, 2022
9:00 AM - 5:00 PM
(Networking Drinks 5 - 7pm)
The Lush, Woolloongabba

Book your tickets at:
eventbrite.com.au/e/brisstyle-create-connect-conference-2022-tickets-257691571427



From the Socials

Chinese Art Exhibition
4-18 March
Inala Art Gallery

Raku Workshop - CAQ
19th February
Clay Studio Gold Coast

Weave a Basket - QLD Spinners &
Weavers
27th February
Auchenflower

Resin Jewellery with Scattered Arts
16th February
@ The Hub

Glass Bead Making
26 & 27th February
Creative Glass Guild QLD - Red Hill

Fibre Arts Retreat
29 - 31 July
Mapleton - Sunshine Coast

BVAC COMMITTEE CONTACTS

President

Judy Hamilton
jrhyllh@hotmail.com
Western Suburbs Clayworkers

Secretary

Anna-Margot Collins
bvac2015@gmail.com
Queensland Enamellers Guild

Treasurer

Peter Rayson
ninety-nine.94@optusnet.com.au
Watercolour Society. QLD

Building Co-ordinator

Sandra Evans
bvac2015@gmail.com
APAT

Newsletter

Editor: Judy Hamilton
Design: Kerrie White
rhylleh@hotmail.com

Committee

Sunshine Beaders
Anna-Margot Collins and Allie Collins

Scattered Arts
Wendy Goode

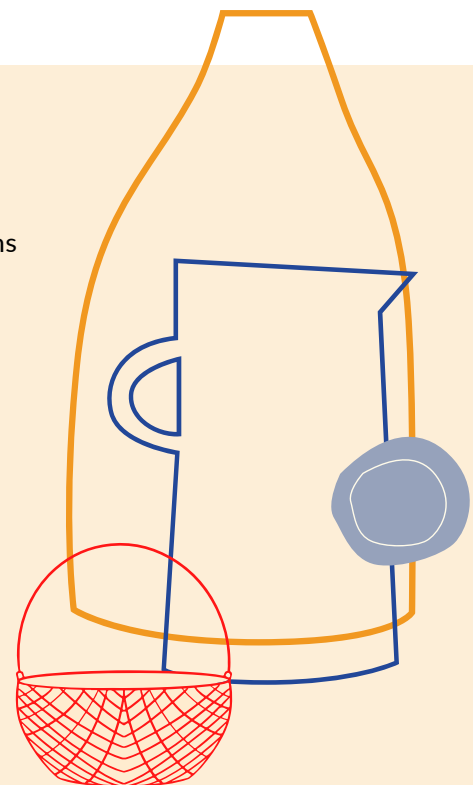
Papermakers Artists Qld
Chris Bryant

Watercolour Society, QLD
Julie Brims

LeatherCrafters AQ
Shirley McCormick

ATASDA
Liz Horrigan

Migaloo Press
Sandra Pearce



contact:

bvac2015@gmail.com
PO Box 7098
Holland Park East Q 4121